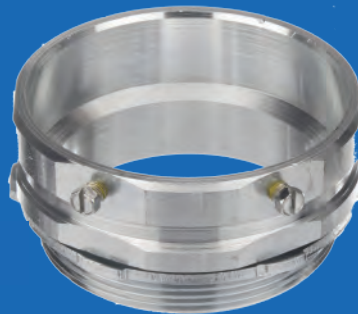




EMT Electrical Fittings

Specification Grade
Alloy Steel
Made in the USA



1/2" - 4"
Connectors & Couplings
Set Screw & Compression
RainTIGHT Fittings
Insulated Throats
Adapters to
Convert EMT to Rigid or Flex
Ground Bushings
Supports, Straps, Hangers

Time to Think Beyond Government Projects!
The Perfect EMT Fitting to
Decrease Your Labor Costs and
Improve Your Installations



Products Guaranteed for Life

**Energy Projects, Data Centers, Hospitals,
Infrastructure, & Industrial Facilities
Trust One Name,
AMERICAN**



**AMFICO Fittings are Alloy Steel Construction with
TWICE the Strength and Corrosion Resistance of
Die Cast and Malleable Iron**

AMERICAN FITTINGS

Corporation



Manufactured in the USA Since 1946

t: 800.221.5268
amftgs.com

© 2017 042017.1EMT

Fair Lawn, New Jersey





Since 1946

AMFICO EMT Steel Fittings

Exceeding Your Expectations, Not Your Budget

RETHINK AMERICAN

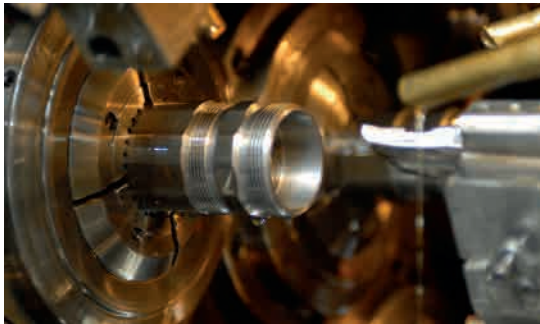
Thought of as a fittings source for Buy America jobs, you should realize our full range of industrial fittings go WELL BEYOND government work. Infrastructure to industrial being much easier to install and always surpassing application requirements, our fittings will outperform ALL others, as will our commitment to customer service.

AMERICAN INTEGRITY OF MATERIALS

AMERICAN FITTINGS' products are manufactured from US manufactured hot rolled alloy steel bar stock. All materials are received from the mill with certified ASTM mill test reports. This ensures the integrity of raw material for every fitting we manufacture.



Our Raw Material
Fully Documented
US Made
Alloy Steel Bar Stock



Precision Cutting and Machining of Every Part

AMERICAN CONSISTENCY OF PRODUCT

Why are you using inferior die cast or malleable iron fittings for specification grade industrial projects? Neither of these materials offers the uniformity of threads and compression, that our alloy steel provides. Our consistent centerlines provides precise alignment with enclosures and conduit. Environmental integrity and ease of installation are guaranteed with the manufacturing and machining processes we employ.

No fitting found worldwide can meet the quality and integrity of AMFICO.

AMERICAN INNOVATION

Products that install faster and perform more reliably



Uniformity of Centerlines
Provide Dead Center Alignment
on All Enclosures & Panels



Reduce Your Waste
Never Break Another Screw
Or Crack Another Fitting During Installation



AMFICO EMT Rain**TIGHT**
Guaranteed

EMT Products Certified to
MIL-STD 810 Sinusoidal Vibration Testing

AMERICAN STRENGTH IS UNEQUALED

There is no way to get around the numbers, twice the strength of MI at a fraction of the weight. Alloy steel will outperform and outlast both die cast and malleable iron products. Alloy steel is not dependent on carbon for strength, and is naturally stronger with greater benefits in harsh conditions. Additive elements found in alloy steel make it NATURALLY corrosion resistant.

Machined Alloy Steel [Ours]	
ASTM Physical Test	Result
Tensile Strength (kpsi)	78
Yield Strength (kpsi)	70
Elongation (% in 2")	15
Brinell Hardness	163
Creep Concern *	No

Cast Malleable Iron [Theirs]	
ASTM Physical Test	Result
Tensile Strength (kpsi)	52
Yield Strength (kpsi)	33
Elongation (% in 2")	10
Brinell Hardness	110 - 114
Creep Concern *	unknown

Zinc Die Cast (Zamack # 3 -7)[Theirs]	
ASTM Physical Test	Result
Tensile Strength (kpsi)	41
Yield Strength (kpsi)	31
Elongation (% in 2")	13
Brinell Hardness	80
Creep Concern *	Yes

* Creep (sometimes called cold flow) is the tendency of a solid material to move slowly or deform permanently under the influence of mechanical stresses. It can occur as a result of long-term exposure to high levels of stress that are still below the yield strength of the material.



Since 1946

AMFICO EMT Steel Fittings

Save Time & Reduce Costs

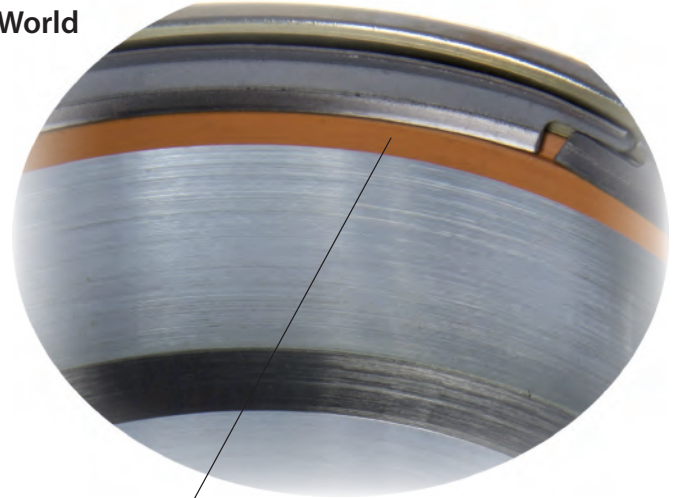
1/2" through 4"
Set Screw Couplings
Set Screw Connectors
Compression Couplings
Compression Connectors
Combo Couplings EMT to
Rigid, Liquid Tight, FMC

AMFICO Quality Inspected During
Each Manufacturing Process
Provides You With the
BEST Fitting Made in the World

RainTIGHT Fittings Feature
AMFICO Proprietary
Internal Environmental Sealing Ring



Full Torque No Problem with Our
EZ Torque™ Compression Nuts



Corrosion Resistant Alloy Steel is
Industrial Grade Zinc Plating with
Chromate Finish

RT Series UL Listed RainTIGHT

PRECISION MACHINE CUT THREADS

Provide Full Torque Values
Never "Cross-Thread" Another Fitting
Secures Conduit with Less Labor

GUARANTEED DIMENSIONAL CONSISTENCY

Precision Machined Alloy Steel Fittings
Guaranteed Defect Free and
Consistent From One Fitting To The Next
Fittings Are Exact-to-Size So Every Fitting
Fits Perfectly Every Time
Full Interior Smoothness Provides
Burrless Wire Pulls
Uniformed Squared Surface to Transition to Enclosures and
Hold Pipe Runs Straight and True

INTEGRITY OF PRODUCTS

Manufactured by AMERICAN FITTINGS in the USA
Fittings Guaranteed for the Life of the Product
Each Fitting Stamped UL and USA



RT Series Connectors Furnished With
Industrial Grade Sealing Ring and
Steel Locknut



2 1/2" & Larger
Furnished with
2 Hex Screws Per End

Set Screw Fittings Feature Steel Screws
Deep Slots Minimize Driver Slippage
Tri-drive Screws Can Accommodate 3
Different Types Of Drivers – Phillips, Straight
Blade, And Robertson (Square)



042017.1EMT

AMERICAN FITTINGS

EMT Fittings Alloy Steel Made in the USA

Connectors & Couplings Compression



Since 1946

SPEC-grade™

UL Rated Concrete Tight When Taped
Size Range: 1/2" - 4" Alloy Steel
EC Series Connectors & Couplings Compression
 UL Rated Concrete Tight When Taped
 Rain Tight Available See EC RT Series
 Connectors Furnished with:
 Industrial Grade Steel Locknut Furnished

Available:
 Solid Alloy Steel Construction, Precision Machined
 EC Series: Compression Feature:
 AMFICO EZTorque Compression Nut
 Zinc Plated, Chromate Finish - Colors available
 Insulated Throat Bushing Option Available on Connectors*



2 1/2" through 4" features AMFICO's
 Compact Low Profile Design

EZ Torque™
 Compression Nuts



EMT AMFICO SPEC-grade™ Connectors & Couplings Compression

Cat #	Trade Size "	Description	Box Qty.	Carton Qty	NAED UPC
EC750US	1/2	EMT Steel Compression Connector USA	50	250	66236401770
EC751US	3/4	EMT Steel Compression Connector USA	25	250	66236401771
EC752US	1	EMT Steel Compression Connector USA	20	100	66236401772
EC753US	1 1/4	EMT Steel Compression Connector USA	5	50	66236401773
EC754US	1 1/2	EMT Steel Compression Connector USA	5	25	66236401774
EC755US	2	EMT Steel Compression Connector USA	5	25	66236401775
EC756US	2 1/2	EMT Steel Compression Connector USA	-	5	66236401776
EC757US	3	EMT Steel Compression Connector USA	-	3	66236401777
EC758US	3 1/2	EMT Steel Compression Connector USA	-	3	66236401778
EC759US	4	EMT Steel Compression Connector USA	-	2	66236401779
EC760US	1/2	EMT Steel Compression Coupling USA	50	250	66236401780
EC761US	3/4	EMT Steel Compression Coupling USA	25	125	66236401781
EC762US	1	EMT Steel Compression Coupling USA	20	100	66236401782
EC763US	1 1/4	EMT Steel Compression Coupling USA	5	50	66236401783
EC764US	1 1/2	EMT Steel Compression Coupling USA	5	25	66236401784
EC765US	2	EMT Steel Compression Coupling USA	5	25	66236401785
EC766US	2 1/2	EMT Steel Compression Coupling USA	-	5	66236401786
EC767US	3	EMT Steel Compression Coupling USA	-	3	66236401787
EC768US	3 1/2	EMT Steel Compression Coupling USA	-	2	66236401788
EC769US	4	EMT Steel Compression Coupling USA	-	2	66236401789

Options

* Insulated Throat Bushings Rated 105° on Connectors Available:
 Add suffix "B" to above cat #'s:i.e. ECXXXXB

Color Coded Fittings Available Consult Factory for Details

AMERICAN FITTINGS

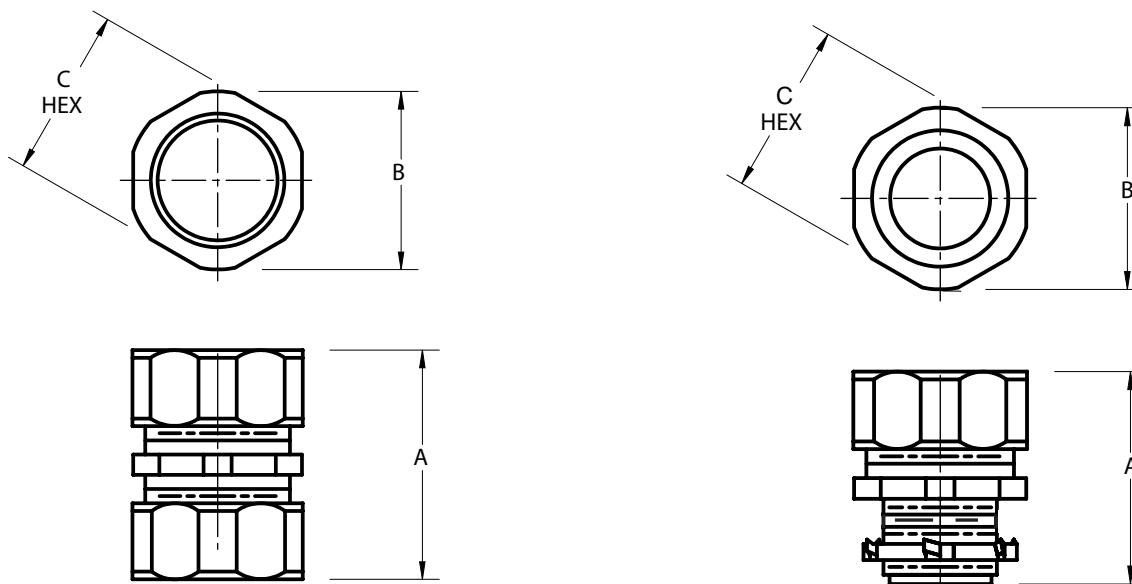
EMT Fittings Alloy Steel Made in the USA

Connectors & Couplings Compression



Since 1946

EMT AMFICO **SPEC-grade**™ Connectors & Couplings Compression



1/2 the Size and Weight of All Die Cast, Malleable Iron or Off Shore Steel Fittings, TWICE the Strength & Corrosion Resistance

DIMENSION TABLE

Connectors

Couplings

Cat#	Trade Size	"A"	"B"	"C"	Wt./c	Cat#	Trade Size	"A"	"B"	"C"	Wt./c
EC750US	1/2"	1-1/8"	1"	15/16"	8	EC760US	1/2"	1-3/8"	1"	15/16"	8
EC751US	3/4"	1-3/16"	1-7/32"	1-3/16"	12	EC761US	3/4"	1-7/16"	1-7/32"	1-3/16"	13
EC752US	1	1-5/16"	1-1/2"	1-7/16"	19	EC762US	1	1-17/32"	1-1/2"	1-7/16"	19
EC753US	1-1/4"	1-9/16"	1-7/8"	1-13/16"	30	EC763US	1-1/4"	1-27/32"	1-7/8"	1-13/16"	30
EC754US	1-1/2"	1-11/16"	2-5/32"	2-1/16"	46	EC764US	1-1/2"	2-1/16"	2-5/32"	2-1/16"	46
EC755US	2"	1-7/8"	2-7/8"	2-9/16"	55	EC765US	2"	2-1/4"	2-7/8"	2-9/16"	60
EC756US	2-1/2"	3-1/8"	3-13/32"	3-1/4"	120	EC766US	2-1/2"	3-5/8"	3-13/32"	3-1/4"	133
EC757US	3"	3-1/16"	4"	3-29/32"	165	EC767US	3"	3-11/16"	4"	3-29/32"	171
EC758US	3-1/2"	3-1/16"	4-9/16"	4-13/32"	201	EC768US	3-1/2"	3-19/32"	4-9/16"	4-13/32"	205
EC759US	4"	3-1/16"	5-3/32"	4-29/32"	237	EC769US	4"	3-5/8"	5-3/32"	4-29/32"	238

Compliances:

Certified Made in the USA

UL 514B

NEMA Standard FB1

Certified for MIL-STD 810 Sinusoidal Vibrations

Federal Standard A-A-50553

UL Standards: 514B, 467

CSA Standard: C22.2 No. 18F

RoHS Compliant



- No need to disassemble AMFICO fittings prior to installation. AMFICO EMT Compression Fittings are designed so that when they come out of the carton they can be installed.

- No need for special tools to properly install AMFICO EMT fittings. AMFICO's fittings feature our EZ Torque Compression nuts with true precision machined cut steel threads, fit tight, right everytime.

AMERICAN FITTINGS

EMT Fittings Alloy Steel Made in the USA

Couplings & Connectors Set Screw



Since 1946

SPEC-grade™

Size Range: 1/2" - 4" Alloy Steel
SS Series Connectors & Couplings Set Screw
 Connectors Furnished with:
 Industrial Grade Locknut
 UL Rated Concrete Tight When Taped
 Vibration Resistant Steel Steel Screws

Available:
 Solid Alloy Steel Construction, Precision Machined
 1/2"- 2" 1 Screw per end; 2 1/2"- 4" 2 Screws Per End
 Zinc Plated, Chromate Finish - Colors available
 Insulated Throat Bushing Option Available on Connector*
 UL Rated Concrete Type When Taped



EMT AMFICO **SPEC-grade™** Connectors & Couplings Set Screw

Cat #	Trade Size "	Description	Box Qty.	Carton Qty	NAED UPC
SS50US	1/2	EMT Steel Set Screw Connector USA	50	250	66236419060
SS51US	3/4	EMT Steel Set Screw Connector USA	25	125	66236419062
SS52US	1	EMT Steel Set Screw Connector USA	20	100	66236419064
SS53US	1 1/4	EMT Steel Set Screw Connector USA	5	25	66236419066
SS54US	1 1/2	EMT Steel Set Screw Connector USA	5	25	66236419068
SS55US	2	EMT Steel Set Screw Connector USA	-	20	66236419070
SS56US	2 1/2	EMT Steel Set Screw Connector USA	-	6	66236419072
SS57US	3	EMT Steel Set Screw Connector USA	-	6	66236419074
SS58US	3 1/2	EMT Steel Set Screw Connector USA	-	3	66236419076
SS59US	4	EMT Steel Set Screw Connector USA	-	3	66236419078
SS60US	1/2	EMT Steel Set Screw Coupling USA	50	250	66236419100
SS61US	3/4	EMT Steel Set Screw Coupling USA	25	125	66236419102
SS62US	1	EMT Steel Set Screw Coupling USA	10	50	66236419104
SS63US	1 1/4	EMT Steel Set Screw Coupling USA	5	25	66236419106
SS64US	1 1/2	EMT Steel Set Screw Coupling USA	5	25	66236419108
SS65US	2	EMT Steel Set Screw Coupling USA	-	20	66236419110
SS66US	2 1/2	EMT Steel Set Screw Coupling USA	-	5	66236419112
SS67US	3	EMT Steel Set Screw Coupling USA	-	3	66236419114
SS68US	3 1/2	EMT Steel Set Screw Coupling USA	-	2	66236419116
SS69US	4	EMT Steel Set Screw Coupling USA	-	2	66236419118

Options

* Insulated Throat Bushings Rated 105° on Connectors Available:

Add suffix "B" to above cat #'s:i.e. ECXXXXB

Color Coded Fittings Available Consult Factory for Details

AMERICAN FITTINGS

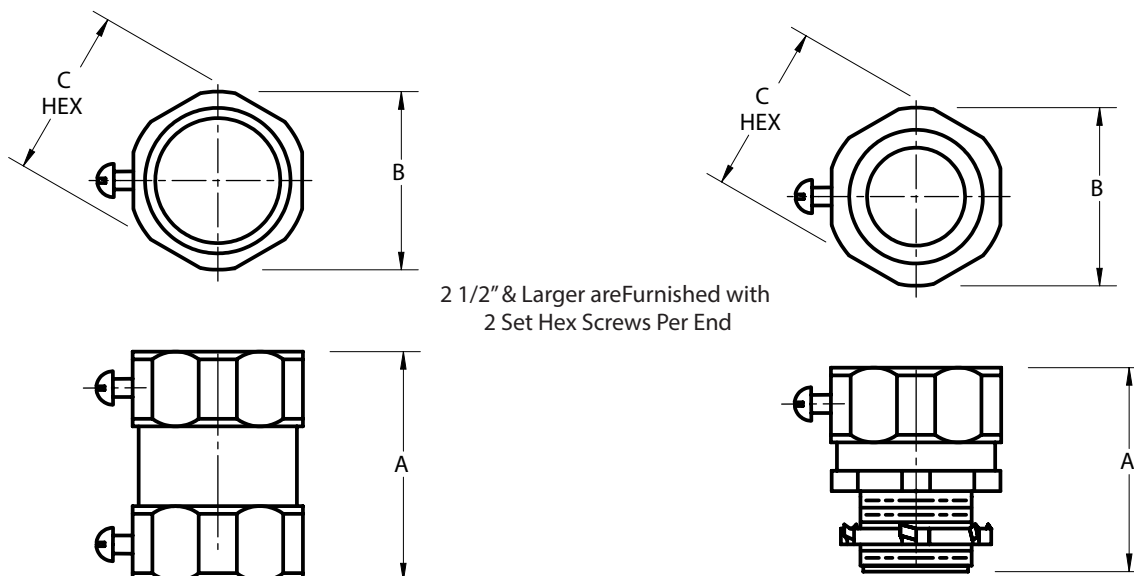
EMT Fittings Alloy Steel Made in the USA

Connectors & Couplings Set Screw



Since 1946

EMT AMFICO **SPEC-grade**™ Connectors & Couplings Compression



1/2 the Size and Weight of All Die Cast, Malleable Iron or Off Shore Steel Fittings, TWICE the Strength & Corrosion Resistance

DIMENSION TABLE

Connectors

Couplings

Cat#	Trade Size	"A"	"B"	"C"	Wt./c	Cat#	Trade Size	"A"	"B"	"C"	Wt./c
SS50US	1/2"	1-5/32"	63/64"	15/16"	10	SS60US	1/2"	1-1/2"	7/8"	27/32"	10
SS51US	3/4"	1-3/16"	1-7/32"	1-11/64"	14	SS61US	3/4"	1-1/2"	1-1/8"	1-1/16"	15
SS52US	1	1-1/2"	1-1/2"	1-7/16"	23	SS62US	1	1-7/8"	1-11/32"	1-13/32"	24
SS53US	1-1/4"	1-11/16"	2-7/8"	1-13/16"	40	SS63US	1-1/4"	2-3/16"	1-3/4"	1-11/16"	44
SS54US	1-1/2"	1-29/32"	2-5/32"	2-1/16"	52	SS64US	1-1/2"	2-19/32"	2-1/32"	1-31/32"	68
SS55US	2"	2-29/32"	2-21/32"	2-9/16"	80	SS65US	2"	2-11/16"	2-1/2"	2-13/32"	90
SS56US	2-1/2"	2-3/8"	3-13/32"	3-1/4"	116	SS66US	2-1/2"	2-17/32"	3-13/32"	3-1/4"	113
SS57US	3"	2-7/16"	4"	3-29/32"	160	SS67US	3"	2-5/8"	4"	3-29/32"	127
SS58US	3-1/2"	2-7/16"	4-9/16"	4-13/32"	210	SS68US	3-1/2"	2-5/8"	4-9/16"	4-13/32"	156
SS59US	4"	2-7/16"	5-3/32"	4-29/32"	240	SS69US	4"	2-5/8"	5-3/32"	4-29/32"	172

- Steel , Zinc Plated Set Screws
- Vibration Resistant Maintain Grip & Bonding
- Accept FULL Torque without Concern for Cracking Fitting
- Tri-head screws (1/2" to 2" trade sizes) may be installed using a slotted, Phillips, or Robertson head screwdriver.
- Full Hex Head Screws (2 1/2" - 4")
- AMFICO Set Screw Fittings Are IMPOSSIBLE to CRACK

Compliances:

Certified Made in the USA

UL 514B

NEMA Standard FB1

Certified for MIL-STD 810 Sinusoidal Vibrations

Federal Standard A-A-50553

UL Standards: 514B, 467

CSA Standard: C22.2 No. 18F

RoHS Compliant



AMERICAN FITTINGS

EMT Rain Tight Fittings Alloy Steel Made in the USA Couplings & Connectors Compression



Since 1946

SPEC-grade™

Size Range: 1/2" - 4" Alloy Steel

EC RT Series UL Listed Rain Tight & Concrete Tight**

Connectors Furnished with:

Industrial Grade Locknut and Industrial Sealing Washer

**UL Rated Concrete Tight When Taped

Available:

Solid Alloy Steel Construction, Precision Machined

EC RT Series Compression Feature:

EZTorque Compression Nut

Zinc Plated, Chromate Finish Nuts Colored: Gold

Insulated Throat Bushing Option Available on Connector*



2 1/2" through 4" features AMFICO's
Compact Low Profile Design

EZ Torque™
Compression Nuts



Rain Tight Fittings Feature
Gold Color Nuts for Inspection Identification

EMT AMFICO SPEC-grade™ RainTIGHT Connectors & Couplings Compression

Cat # *	Trade Size "	Description	Box Qty.	Carton Qty	NAED UPC
EC750USRT	1/2	EMT Steel Compression Connector RainTIGHT USA	50	250	66236401810
EC751USRT	3/4	EMT Steel Compression Connector RainTIGHT USA	25	250	66236401830
EC752USRT	1	EMT Steel Compression Connector RainTIGHT USA	20	100	66236401832
EC753USRT	1 1/4	EMT Steel Compression Connector RainTIGHT USA	5	50	66236401834
EC754USRT	1 1/2	EMT Steel Compression Connector RainTIGHT USA	5	25	66236401836
EC755USRT	2	EMT Steel Compression Connector RainTIGHT USA	5	25	66236401775
EC756USRT	2 1/2	EMT Steel Compression Connector RainTIGHT USA	0	5	66236401776
EC757USRT	3	EMT Steel Compression Connector RainTIGHT USA	0	3	66236401777
EC758USRT	3 1/2	EMT Steel Compression Connector RainTIGHT USA	0	3	66236401778
EC759USRT	4	EMT Steel Compression Connector RainTIGHT USA	0	2	66236401779
EC760USRT	1/2	EMT Steel Compression Couplings RainTIGHT USA	50	250	66236401850
EC761USRT	3/4	EMT Steel Compression Couplings RainTIGHT USA	25	125	66236401852
EC762USRT	1	EMT Steel Compression Couplings RainTIGHT USA	20	100	66236401854
EC763USRT	1 1/4	EMT Steel Compression Couplings RainTIGHT USA	5	50	66236401856
EC764USRT	1 1/2	EMT Steel Compression Couplings RainTIGHT USA	5	25	66236401858
EC765USRT	2	EMT Steel Compression Couplings RainTIGHT USA	5	25	66236401860
EC766USRT	2 1/2	EMT Steel Compression Couplings RainTIGHT USA	-	5	66236401862
EC767USRT	3	EMT Steel Compression Couplings RainTIGHT USA	-	3	66236401864
EC768USRT	3 1/2	EMT Steel Compression Couplings RainTIGHT USA	-	2	66236401866
EC769USRT	4	EMT Steel Compression Couplings RainTIGHT USA	-	2	66236401868

Options

* Insulated Throat Bushings Rated 105° on Connectors Available:

Add suffix "B" to above cat #'s:i.e. ECXXXXB

Color Coded Fittings Available Consult Factory for Details

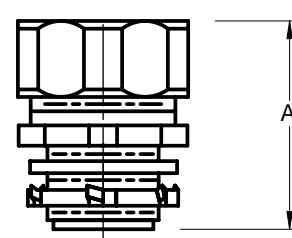
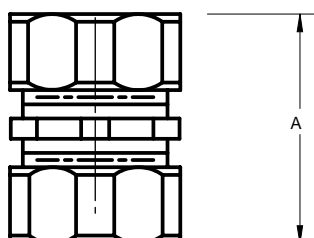
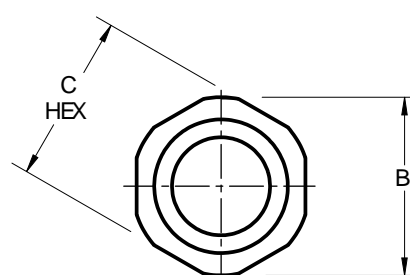
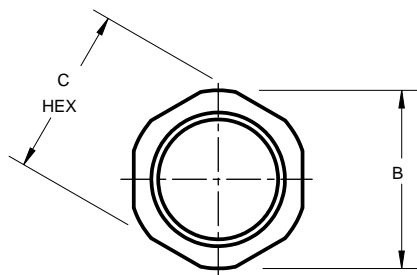
AMERICAN FITTINGS

EMT RainTIGHT Fittings Alloy Steel Made in the USA
Connectors & Couplings Compression



Since 1946

EMT AMFICO SPEC-grade™ RainTIGHT Connectors & Couplings Compression



1/2 the Size and Weight of All Die Cast, Malleable Iron or Off Shore Steel Fittings, TWICE the Strength & Corrosion Resistance

DIMENSION TABLE

Connectors

Couplings

Cat#	Trade Size	"A"	"B"	"C"	Wt./c	Cat#	Trade Size	"A"	"B"	"C"	Wt./c
EC750USRT	1/2"	1-1/8"	1"	15/16"	8	EC760USRT	1/2"	1-3/8"	1"	15/16"	8
EC751USRT	3/4"	1-3/16"	1-7/32"	1-3/16"	12	EC761USRT	3/4"	1-7/16"	1-7/32"	1-3/16"	13
EC752USRT	1	1-5/16"	1-1/2"	1-7/16"	19	EC762USRT	1	1-17/32"	1-1/2"	1-7/16"	19
EC753USRT	1-1/4"	1-9/16"	1-7/8"	1-13/16"	30	EC763USRT	1-1/4"	1-27/32"	1-7/8"	1-13/16"	30
EC754USRT	1-1/2"	1-11/16"	2-5/32"	2-1/16"	46	EC764USRT	1-1/2"	2-1/16"	2-5/32"	2-1/16"	46
EC755USRT	2"	1-7/8"	2-7/8"	2-9/16"	55	EC765USRT	2"	2-1/4"	2-7/8"	2-9/16"	60
EC756USRT	2-1/2"	3-1/8"	3-13/32"	3-1/4"	120	EC766USRT	2-1/2"	3-5/8"	3-13/32"	3-1/4"	133
EC757USRT	3"	3-1/16"	4"	3-29/32"	165	EC767USRT	3"	3-11/16"	4"	3-29/32"	171
EC758USRT	3-1/2"	3-1/16"	4-9/16"	4-13/32"	201	EC768USRT	3-1/2"	3-19/32"	4-9/16"	4-13/32"	205
EC759USRT	4"	3-1/16"	5-3/32"	4-29/32"	237	EC769USRT	4"	3-5/8"	5-3/32"	4-29/32"	238

Compliances:

Certified Made in the USA

UL 514B

NEMA Standard FB1

Certified for MIL-STD 810 Sinusoidal Vibrations

Federal Standard A-A-50553

UL Standards: 514B, 467

CSA Standard: C22.2 No. 18F

RoHS Compliant



- All AMFICO RT fittings are manufactured with a factory installed sealing ring (s) to ensure a fully rain tight installation. Connectors come with a sealing ring, no need for additional gaskets or silicon.

- No need to disassemble AMFICO fittings prior to installation. AMFICO Raintight Steel EMT Compression Fittings are designed so that when they come out of the carton they can be installed directly on the conduit.

- No need for special tools to properly install AMFICO EMT RT fittings. AMFICO's fittings feature our EZ Torque Compression nuts with true precision machined cut steel threads, fit tight, right everytime.

AMERICAN FITTINGS

EMT Fittings Alloy Steel Made in the USA

EMT to Liquid Tight Combination Couplings



Since 1946

SPEC-grade™

Size Range: 1/2" - 2"* Alloy Steel
EMT to Liquid Tight Combination Coupling
 Covert your EMT to liquid tight conduit with this compression coupling. Liquid type fitting on one end, EMT compression on the other.

RainTight EMT to Liquid Tight Available**

Available:

Precision Machined Alloy Steel Construction
 Zinc Plated, Chromate Finish
 Galvanized Plating Option Available
 Liquid Tight End Features AMFICO's
 Uniquely Designed XL Ferrule for Positive Ground and Lock



Also Available in
 90° & 45° Configurations

Liquid TIGHT to EMT Compression

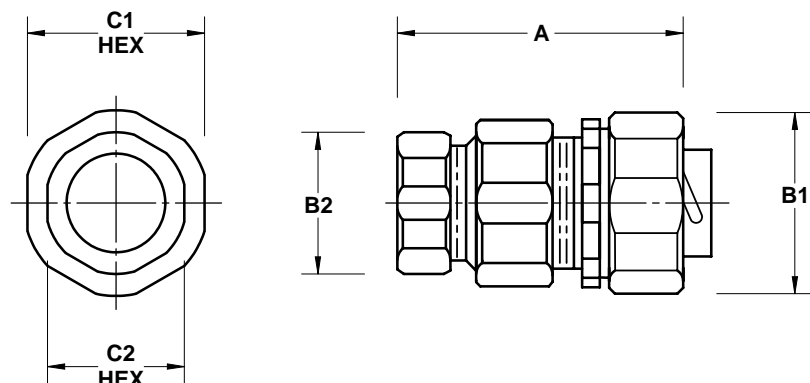
EMT to LiquidTIGHT to Compression SPEC-grade™ Couplings 1/2" to 2"*

Cat # **	Trade Size"	Description	Box Qty.	Carton Qty.	Wt/c.	NAED UPC
STREMT50	1/2	Combination Couplings - Liquidtight to EMT	20	100	16	66236430750
STREMT75	3/4	Combination Couplings - Liquidtight to EMT	10	100	22	66236430751
STREMT100	1	Combination Couplings - Liquidtight to EMT	5	50	40	66236430752
STREMT125	1 1/4	Combination Couplings - Liquidtight to EMT	5	25	75	66236430753
STREMT150	1 1/2	Combination Couplings - Liquidtight to EMT	5	25	98	662364 30761
STREMT200	2	Combination Couplings - Liquidtight to EMT	2	10	140	66236430762

* Larger sizes and other configurations may be available, please consult factory

** Add RT to Cat # for EMT Rain Tight Configuration

Available as 90 and 45



Compliances:

Certified Made in the USA
 UL 514B
 NEMA Standard FB1
 Federal Standard A-A-50553
 NEC: Class I, Division 2
 Class II, Divisions 1 and 2
 Class III, Divisions 1 and 2
 UL Standards: 514B, 467
 CSA Standard: C22.2 No. 18F



Cat # **	Trade Size	A Lght.	B1 Dia.	B2 Dia.	C1 Hex	C2 Hex
STREMT50	1/2"	1-17/32"	1-3/16"	1"	1-1/8"	15/16"
STREMT75	3/4"	1-21/32"	1-7/16"	1-7/32"	1-3/8"	1-3/16"
STREMT100	1"	1-13/16"	1-3/4"	1-1/2"	1-11/16"	1-7/16"
STREMT125	1-1/4"	2-3/4"	2-5/32"	1-7/8"	2-1/16"	1-13/16"
STREMT150	1-1/2"	3-5/32"	2-3/8"	2-5/32"	2-9/32"	2-1/16"
STREMT200	2"	3-3/8"	2-7/8"	2-7/8"	2-3/4"	2-9/16"

AMERICAN FITTINGS

EMT Fittings Alloy Steel Made in the USA

EMT to Rigid Combination Couplings



Since 1946

SPEC-grade™

Size Range: 1/2" - 2"* Alloy Steel
EMT to Rigid Conduit Combination Coupling

Covert your EMT to Rigid or IMC conduit with this compression coupling. EMT compression coupling 1 end, Rigid compression coupling other end.

Available:
Solid Alloy Steel Construction, Precision Machined
ETR Series: EMT Compression - Rigid End Threaded
Zinc Plated, Chromate Finish
ETR RT Series UL Listed for Rain Tight **



EZ Torque™
Compression Nut on EMT End
Threaded other End for Rigid Conduit



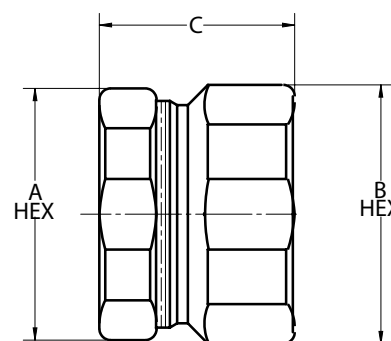
Rain Tight Fittings Feature
Gold Color Nuts for Inspection Identification

EMT to Rigid Conduit Coupling AMFICO **SPEC-grade™** with Rain Tight Option*

Cat # **	Trade Size "	Description	Box Qty.	Carton Qty.	Wt/c.	NAED UPC
ETR50	1/2	Steel EMT to Rigid Combination Compression Coupling	25	250	19	6623640174
ETR75	3/4	Steel EMT to Rigid Combination Compression Coupling	10	100	27	6623640174
ETR100	1	Steel EMT to Rigid Combination Compression Coupling	5	50	28	6623640174
ETR125	1 1/4	Steel EMT to Rigid Combination Compression Coupling	5	50	30	6623640175
ETR150	1 1/2	Steel EMT to Rigid Combination Compression Coupling	5	25	41	6623640175
ETR200	2	Steel EMT to Rigid Combination Compression Coupling	5	25	58	6623640175

* For Sizes Over 2" Consult Factory

** For Rain Tight Product Add "RT" to the Above Cat #.



Compliances:

Certified Made in the USA
UL 514B
NEMA Standard FB1
Federal Standard A-A-50553
UL Standards: 514B, 467
RoHS Compliant



DIMENSION TABLE

Cat #	Trade Size "	"A" Nut OD	"B" Body OD	"C" Lgth."
ETR 50	1/2	15/16	15/16	1-1/4
ETR 75	3/4	1-11/64	1-9/32	1-9/32
ETR100	1	1-7/16	1-9/16	1-15/32
ETR125	1-1/4	1-13/16	1-13/16	1-9/16
ETR150	1-1/2	2-1/16	2-1/16	1-25/32
ETR200	2	2-9/16	2-9/16	1-7/8

* For Sizes Over 2" Consult Factory

AMERICAN FITTINGS

EMT Fittings Alloy Steel Made in the USA
EMT to FMC Combination Couplings



Since 1946

SPECflex™ Connector System

FLEX Series Industrial Flexible Metal Conduit Adapter
Transitions FMC (Greenfield) to EMT
Made in the USA

Solid Steel Fully Machined SPECflex™ Connector with
AMFICO Industrial EMT Set Screw Fitting
Fittings are Solid Steel Zinc Plated

Patent Pending Uniquely Engineered for Industrial Projects and
OEM Product Performance

Superior Performance for Secure Connection and Fast Disconnect
No Tools Required to Install Connector on Flex Conduit



Greenfield to EMT Set Screw

Greenfield to EMT Compression



Save Labor Costs on Every Connection!

One Piece Construction No Need to Disassemble

Greenfield
FMC



EMT
Set Screw

Greenfield
FMC



EMT
Compression

Compliances:

Certified Made in the USA

UL 514B

NEMA Standard FB1

Federal Standard A-A-50553

UL Standards: 514B, 467

RoHS Compliant



Note:

SPECflex connectors are designed to work and interface with UL listed, Made in USA FMC / Greenfield conduit. We cannot guarantee fit, form, or function with non-UL off-shore conduit. Request a sample from factory to ensure compatibility.

AMERICAN FITTINGS

EMT Fittings Alloy Steel Made in the USA

EMT to FMC Combination Couplings



Since 1946

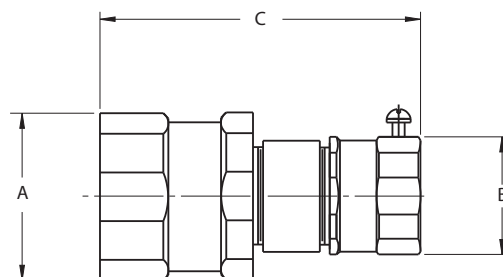
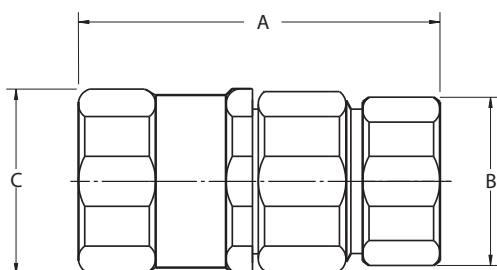
SPEC-grade™

Size Range: 1/2" - 2"* Alloy Steel
FLX Series Combiation Couplings
 Set Screw & Compression EMT
 Connector Includes
 Industrial Sealing Washer & Steel Locknut

Available:
 Zinc Plated, Galvanized Plating
 Insulated Throat Bushing & Steel Locknut
 Furnished on Flex Connector

EMT to FMC Combination Couplings AMFICO **SPEC-grade™** Set Screw or Compression

Cat #	Trade Size "	Description	Box Qty.	Carton Qty.	Wt/c.	NAED UPC
FLXSS 50	1/2	SPECflex Adapter EMT Set Screw to Flex USA	10	100	24	66236421507
FLXSS 75	3/4	SPECflex Adapter EMT Set Screw to Flex USA	5	50	31	66236421508
FLXSS100	1	SPECflex Adapter EMT Set Screw to Flex USA	5	50	51	66236421509
FLXSS125	1 1/4	SPECflex Adapter EMT Set Screw to Flex USA	5	25	78	66236421510
FLXSS150	1 1/2	SPECflex Adapter EMT Set Screw to Flex USA	5	25	96	66236421511
FLXSS200	2	SPECflex Adapter EMT Set Screw to Flex USA	5	10	148	66236421512
FLXEMT 50	1/2	SPECflex Adapter EMT Compression to Flex USA	25	125	21	66236421501
FLXEMT 75	3/4	SPECflex Adapter EMT Compression to Flex USA	10	100	31	66236421502
FLXEMT100	1	SPECflex Adapter EMT Compression to Flex USA	5	50	52	66236421503
FLXEMT125	1 1/4	SPECflex Adapter EMT Compression to Flex USA	5	25	69	66236421504
FLXEMT150	1 1/2	SPECflex Adapter EMT Compression to Flex USA	5	25	89	66236421505
FLXEMT200	2	SPECflex Adapter EMT Compression to Flex USA	2	10	138	66236421506



SPECflex EMT Compression Adapters

Cat #	Trade Size	A	B hex	C hex
FLXEMT50	1/2"	2-7/16"	15/16"	1-1/8"
FLXEMT75	3/4"	2-15/32"	1-3/16"	1-3/8"
FLXEMT100	1"	2-17/32"	1-7/16"	1-5/8"
FLXEMT125	1-1/4"	2-11/16"	1-13/16"	1-31/32"
FLXEMT150	1-1/2"	3-5/32"	2-1/16"	2-3/16"
FLXEMT200	2"	3-5/16"	2-9/16"	2-25/32"

SPECflex EMT SET SCREW Adapters

Cat #	Trade Size	A	B hex	C hex
FLXSS 50	1/2"	2-5/8"	15/16"	1-1/8"
FLXSS75	3/4"	2-21/32"	1-3/16"	1-3/8"
FLXSS 100	1"	2-31/32"	1-7/16"	1-5/8"
FLXSS 125	1-1/4"	3-7/32"	1-13/16"	1-31/32"
FLXSS 150	1-1/2"	3-23/32"	2-1/16"	2-13/16"
FLXSS 200	2"	3-23/32"	2-9/16"	2-25/32"

* For Sizes Over 2" Consult Factory

AMERICAN FITTINGS

EMT Bushings Alloy Steel Made in the USA

Ground & Bonding Bushings Set Screw



Since 1946

SPEC-grade™

Size Range: 1/2" - 4" Alloy Steel
GB Series Set Screw Bushings
 For Use with EMT Threadless Conduit
 3 Set Screws or 2 Set Screws with Lug Option

Available:
 Used with a locknut to terminate threadless EMT
 Aluminum Layin Grounding Lug Copper Lug Option
 Insulator Throat Bushing Prevents Damage to Wire
 Insulated Throat Bushing is UL and 150° Rated



GB Series
 Furnished with Layin Ground Lug



RCB Series - no ground

Precision Machined from Alloy Steel for a Burrless Pull with Twice the Strength of Malleable or Iron Products

EMT Threadless Conduit Bushings AMFICO SPEC-grade™ 1/2" -4" with Ground Option

Cat #	Trade Size"	Description	Box Qty.	Carton Qty.	Wt/c.	NAED UPC
GB 50BNTGL	1/2	Steel Threadless Bushing w/ #14-#4 AL Ground Lug /Insulated Throat	50	250	7	662364 20009
GB 75BNTGL	3/4	Steel Threadless Bushing w/ #14-#4 AL Ground Lug /Insulated Throat	50	250	8	662364 20059
GB 75BNTGL0	3/4	Steel Threadless Bushing w/ #8-1/0 AL: Ground Lug /Insulated Throat	25	125	12	662364 20079
GB100BNTGL	1	Steel Threadless Bushing w/ #14-#4 AL Ground Lug /Insulated Throat	25	250	9	662364 20109
GB100BNTGL0	1	Steel Threadless Bushing w/ #8-1/0 AL: Ground Lug /Insulated Throat	20	100	13	662364 20129
GB125BNTGL	1 1/4	Steel Threadless Bushing w/ #14-#4 AL Ground Lug /Insulated Throat	20	100	15	662364 20159
GB125BNTGL0	1 1/4	Steel Threadless Bushing w/ #8-1/0 AL: Ground Lug /Insulated Throat	20	100	19	662364 20179
GB150BNTGL	1 1/2	Steel Threadless Bushing w/ #14-#4 AL Ground Lug /Insulated Throat	10	50	15	662364 20209
GB150BNTGL0	1 1/2	Steel Threadless Bushing w/ #8-1/0 AL: Ground Lug /Insulated Throat	10	50	20	662364 20229
GB200BNTGL	2	Steel Threadless Bushing w/ #14-#4 AL Ground Lug /Insulated Throat	10	50	21	662364 20259
GB200BNTGL0	2	Steel Threadless Bushing w/ #8-1/0 AL: Ground Lug /Insulated Throat	10	50	24	662364 20279
GB250NTBGL	2 1/2	Steel Threadless Bushing w/ #14-2/0 AL Ground Lug /Insulated Throat	5	25	64	662364 20309
GB250BNTGL250	2 1/2	Steel Threadless Bushing w/ #6-250 mcm AL Ground Lug/Insulated Throat	5	25	77	662364 20329
GB300BNTGL	3	Steel Threadless Bushing w/ #14-1/0 AL Ground Lug /Insulated Throat	5	25	77	662364 20359
GB300BNTGL250	3	Steel Threadless Bushing w/ #6-250 mcm AL Ground Lug/Insulated Throat	3	15	89	662364 20379
GB350BNTGL	3 1/2	Steel Threadless Bushing w/ #14-2/0 AL Ground Lug /Insulated Throat	3	15	91	662364 20359
GB350BNTGL250	3 1/2	Steel Threadless Bushing w/ #6-250 mcm AL Ground Lug/Insulated Throat	3	15	103	662364 20429
GB400BNTGL	4	Steel Threadless Bushing w/ #14-2/0 AL Ground Lug /Insulated Throat	3	15	94	662364 20459
GB400BNTGL250	4	Steel Threadless Bushing w/ #6-250 mcm AL Ground Lug/Insulated Throat	3	15	106	662364 20479

For RCB Series Bushings without Ground Lug Consult Factory for Cat #.

Compliances:

Certified Made in the USA

UL 514B

NEMA Standard FB1

Certified for MIL-STD 810 Sinusoidal Vibrations

Federal Standard A-A-50553

UL Standards: 514B, 467

CSA Standard: C22.2 No. 18F

RoHS Compliant



042017.1EMT

AMERICAN FITTINGS

LOCKnuts Alloy Steel Made in the USA

Industrial Grade Bonding Locknuts



Since 1946

SPEC-grade™
LOCK nuts

Size Range: 1/2" - 4" Alloy Steel

HDI Series SPECgrade Bonding LOCKnuts

Precisioned Machined from Alloy Bar Stock
Fully Torque, It Will NEVER Crack Nor Deform
Made in the USA

Available:

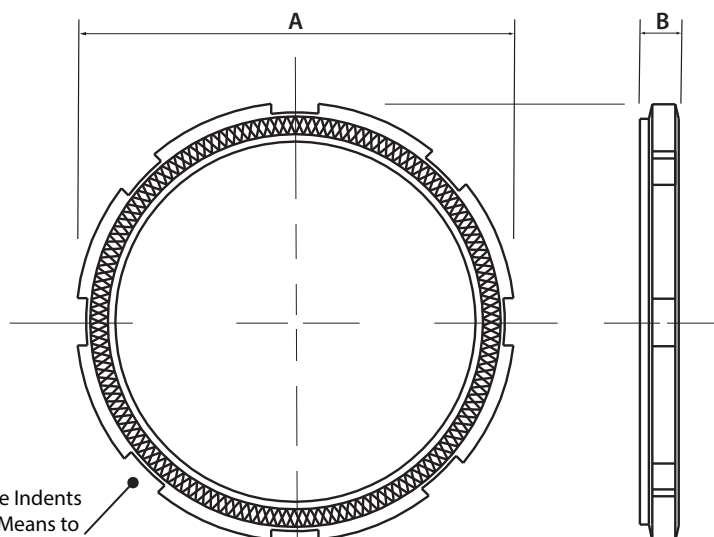
Zinc Plated, Chromate Finish

Galvanized Plating Option Available

Uniquely Designed for Positive Ground and Lock



Unique Circumference Indents
Provide a EZ Failsafe Means to
Tighten Our LOCKnut.



AMFICO SPEC-grade™ HDI LOCKnuts 1/2"-4" Alloy Steel

Cat #	Trade Size"	"A"	"B"	Box Qty.	Carton Qty.	Wt/c	UPC Code
LN 50HDI	1/2	1.13	.13	200	2000	2	66236401500
LN 75HDI	3/4	1.39	.13	100	1000	4	66236401510
LN100HDI	1	1.69	.17	50	500	6	66236401520
LN125HDI	1 1/4	2.06	.17	50	500	14	66236401530
LN150HDI	1 1/2	2.28	.17	25	250	17	66236401540
LN200HDI	2	2.78	.17	25	250	9	66236401550
LN250HDI	2 1/2	3.39	.25	-	30	36	66236401560
LN300HDI	3	4.00	.25	-	25	55	66236401570
LN350HDI	3 1/2"	4.56	.25	-	25	78	66236401580
LN400HDI	4	5.09	.25	-	25	101	66236401590

Compliances:

Certified Made in the USA

UL 514B

NEMA Standard FB1

Federal Standard A-A-50553

UL Standards: 514B, 467

RoHS Compliant



*For a Wide Range of AMFICO EMT Accessories
Please Request our Accessories Catalog or Consult Factory*



AMFTGS.com

t: 800.221.5268

e:info@amftgs.com

© Copyright 2017 AMERICAN FITTINGS Corporation, Fair Lawn, New Jersey

Specifications Subject to Change Without Notice

We Are the Perfect Connection for

Agriculture
Alternative Energy
Data Centers
Federal & State Projects
Food Processing & Production
Hospitals and Medical Centers
Industrial Applications



Infrastructure Construction
Military Bases
OEM Equipment
Oil & Gas Projects
Paper & Pulp
Transportation
Waste Water Treatment

Innovating the Next Generation of Electrical Fittings

Founded in 1946, a family owned and operated, 3rd generation business, we have grown into the world's largest manufacturer of alloy steel electrical fittings. Headquartered in New Jersey, all products are sold exclusively through Authorized Stocking Distributors. Our products are made in the USA, and they will exceed your requirements and expectations, not your budget.

We never apologize why our products are made in America; we suggest you ask our competitors "why they don't"!

Random lot shipping inspection in a foreign country can never replace integrity manufactured into raw materials and manufacturing in this country. Don't consider us as just a government project supplier, consider us as your fitting supplier for all types of projects.

Who says, integrity and quality of products have to be expensive?

Discover our product differentiators, reduction in your installation time, and improvement in your application. . . **We Guarantee It!**

We Are the **ONLY** Manufacturer of a
Full Range of Steel Electrical Fittings
Made in the USA

Request Our Full-Line Catalog or
AMFICO Ground Hub Brochure
Cord Connectors Catalog
EMT Fittings Catalog
Liquid Tight Fittings Catalog
Rigid Conduit Products Catalog
SPECflex™ FMC Connector Catalog
Accessories Catalog
Product Samples

AMFICO™
Made in the USA Since 1946



Sold Exclusively Through Authorized Distributors



Manufacturing and Corporate Offices
AMERICAN FITTINGS Corporation
17-10 Willow Street Fair Lawn, NJ 07410
t: 800.221.5268 | f: 201.664.1175

Online: amftgs.com e: info@amftgs.com

Follow us on



Quality has one name, AMERICAN